

IBI Group

March 18, 2010

Del Mar High School CEC Bus Depot Conversion San Gabriel Unified School District

ADDENDUM NO. 2

The following revisions, clarifications, deletions and/or additions shall be made to the Construction Drawings and Specifications for **Del Mar High School CEC Bus Depot Conversion, for the San Gabriel Unified School District; DSA Application No. 03-112620; Bid No. 02-09/10**. All other requirements of the Contract Documents shall remain the same. Acknowledge Receipt of this Addendum by inserting its number and date in the Bid Proposal.

This Addendum consists of **TWO (2)** parts as follows:

Part 1	DRAWINGS
Part 2	SPECIFICATIONS

Part 1 DRAWINGS

Item No. AD-2.1.1

Sheet C0.3: The Fire Department Connection is to remain as existing, the only additional modification will be the connection of the new 4” fire sprinkler line to the existing 6” fire sprinkler line which will follow with a sketch. Please see attached AD2-C-SK1 and AD2-C-SK2.

Item No. AD-2.1.2

Sheet L0.1: Please use stabilized Decomposed Granite Mulch only at the three (3) planters adjacent to the buildings, so not use the stabilizer at the two vegetative swale planters along Del Mar Avenue.

Item No. AD-2.1.3

Sheet A1.0/C0.3: At the location between the bus garage and the warehouse building there is an existing hoist with a 6” concrete pad. At this location remove the steel plates and fill the void below with gravel and remove the concrete to provide a minimum 2” asphalt covering. Bush the concrete down with a minimum ½” amplitude to provide sufficient bonding. As needed remove the existing asphalt and provide new asphalt/base to conform to the grading plan C0.3. Resurface everything else in that area to conform to the grading plan C0.3. Please see drawings AD2-A-SK1.

Item No. AD-2.1.4

Sheet A1.1/C0.3: Provide paving as described in the architectural plan A1.1 that notes “pervious concrete” at the parking stall locations and the driveway as being “asphalt”.

Item No. AD-2.1.5

Sheet A2.0: Note 22 should read “...interior 1x6 HORIZONTAL sheathing...” in lieu of “...interior 1x6 diagonal sheathing...”

Item No. AD-2.1.6

Sheet A6.2, A6.4: The elevations and plans call out for a Smart Board, this will be furnished by the district.

Item No. AD-2.1.7

Sheet X5.2: Please provide drip flashing at head condition at Detail 3. Please see drawing AD2-A-SK2. This also clarifies the AD1-ARC-SK6 sketch for the jamb condition of the metal siding.

Item No. AD-2.1.8

Sheet S1.2: At area of roof removal provide shoring as required during the duration of construction.

Item No. AD-2.1.9

Sheet E0.2: Re: Single Line diagram and Panel Schedules

- 1) Revise panel schedule 1LB and 1LA per attached drawings AD2-E-SK1 & 2.

Item No. AD-2.1.10

Sheet E0.6: Revise “Existing Electrical Room Detail” to show new intrusion detection panel per drawing AD2-E-SK3.

Item No. AD-2.1.11

Sheet E1.1: Revise plan note 3 to include 2”C for fire alarm.

Item No. AD-2.1.12

Sheet E2.2: Provide 120V. power connections and timeclock for control of EF-1 in accordance with the mechanical drawings. Provide timeclock as specified. Provide 2#12, 1#12 grd. – ½”C. from timeclock to Panel 1LB. Connect to 20 amp 1 pole circuit breaker. See mechanical drawings for equipment locations.

Item No. AD-2.1.13

Sheet E2.3: Re: Signal Plan, Half shaded diamond in storage room to be telephone/data, on flush wall mounted outlet box at +18”.

Item No. AD-2.1.14

Sheet E2.3: Provide one (1) data network outlet on south wall of classroom 106 at 18” AFF next to the power outlet between grid lines C and D. Provide 1” C. with cabling as specified from the outlet to IDF.

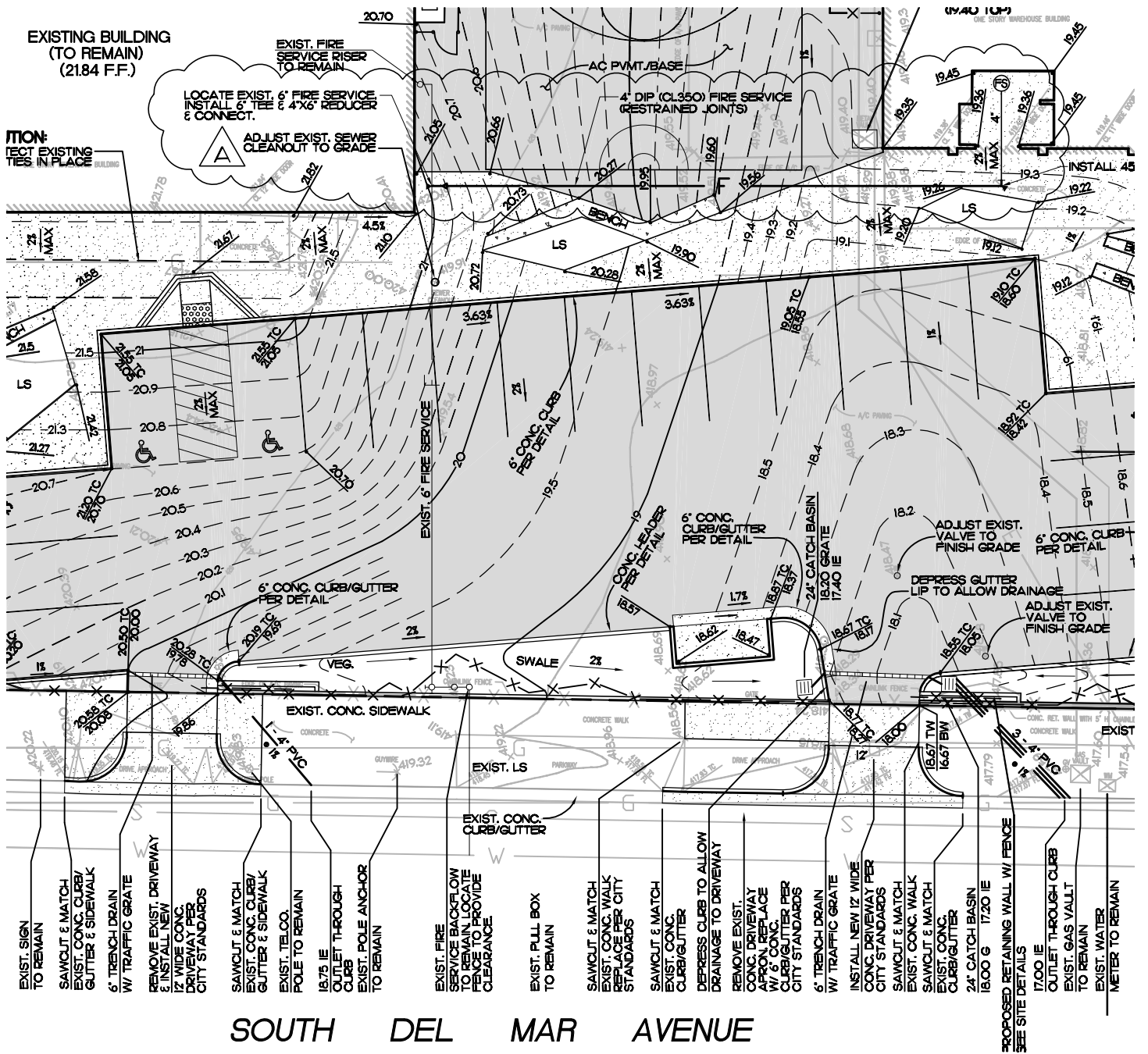
Part 2 SPECIFICATIONS

Item No. AD-2.2.1

Table of Contents:

Delete: “**Section 02515 Concrete Unit Pavers**” in its entirety

Delete: “**Section 16930 Low Voltage Remote Control Relay System**” in its entirety

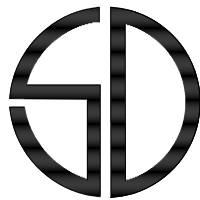


SOUTH DEL MAR AVENUE

REFERENCE SHEET C3.0

ENGINEER OF WORK

A REVISE FIRE SERVICE ALIGNMENT



Snipes-Dye associates
civil engineers and land surveyors

8348 CENTER DRIVE, STE. G, LA MESA, CA 91942
TELEPHONE (619) 697-9234 FAX (619) 460-2033

Robert L. Bruckart 3-12-10

ROBERT L. BRUCKART R.C.E. 48158
EXPIRES 06-30-10



IBI GROUP

18401 Von Karman Ave.
suite 110
Irvine, CA 92612

ph: 949.833.5588
fax: 949.833.5511

**DEL MAR HIGH SCHOOL CEC
BUS DEPOT CONVERSION**

312 DEL MAR AVE., SAN GABRIEL CA 91776
SAN GABRIEL UNIFIED SCHOOL DISTRICT

Appl. No:

Job No:

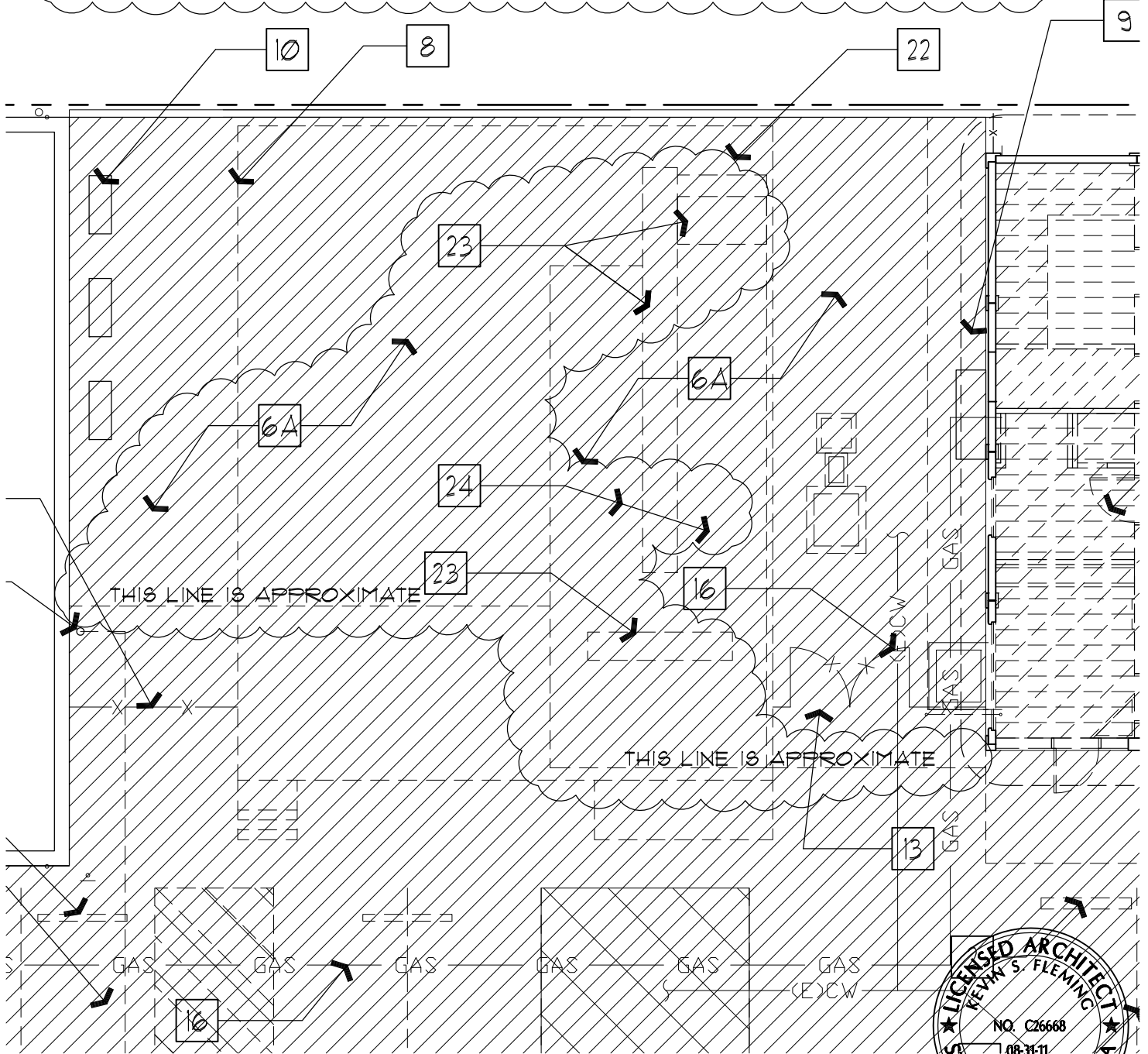
Date: 03-18-10

Drawn By: SDA

Revisions:

Sheet: AD2-C-SK1

- 23 REMOVE STEEL PLATES, FILL VOID WITH GRAVEL
- 24 REMOVE CONCRETE TO PROVIDE A MINIMUM 2" ASPHALT COVERING, BUSH DOWN WITH A MINIMUM 1/2" AMPLITUDE TO PROVIDE SUFFICIENT BONDING



ENLARGED SITE DEMO PLAN

SCALE: 1"=10'



IBI
GROUP

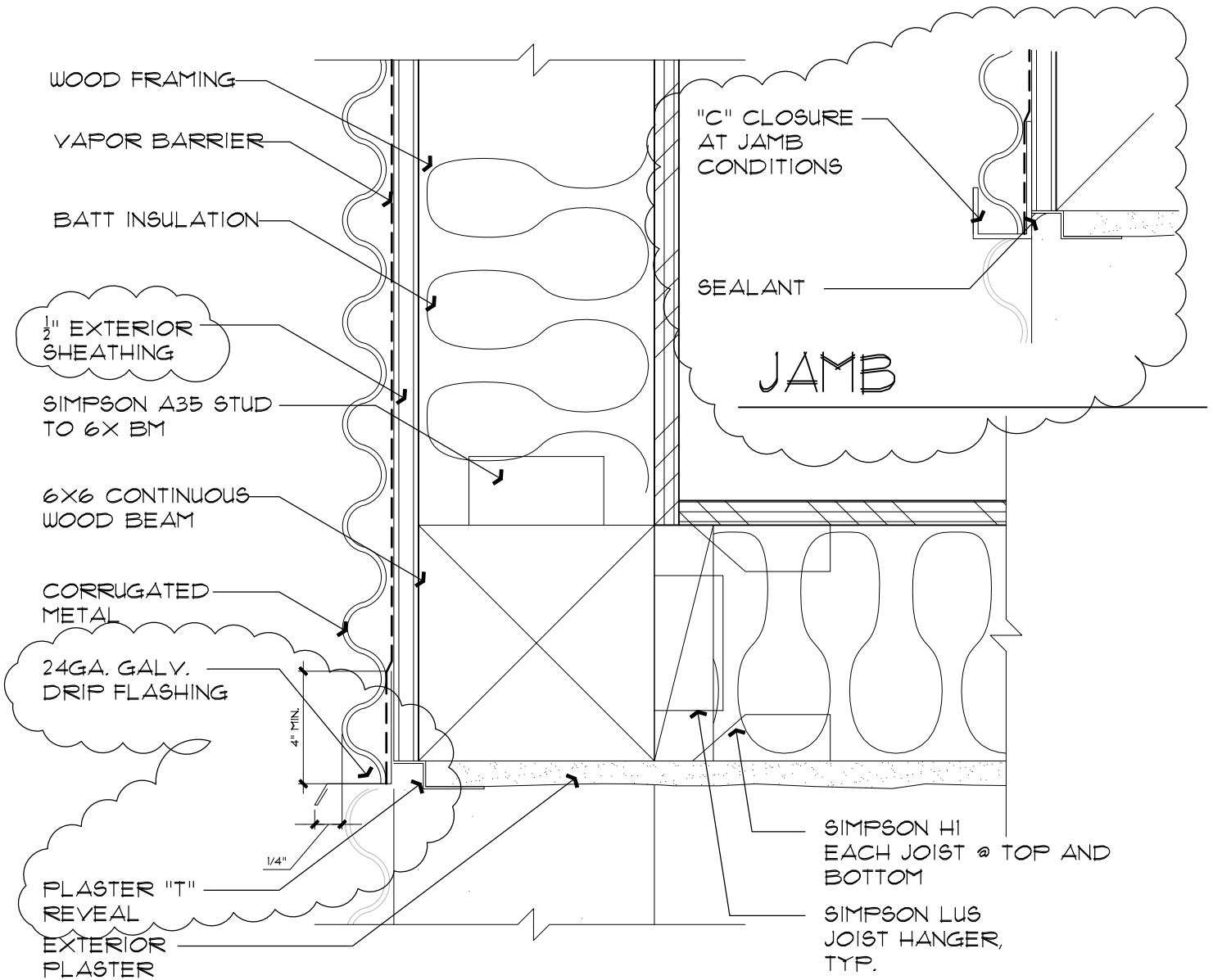
18401 Von Karman Ave.
suite 110
Irvine, CA 92612

ph: 949.833.5588
fax: 949.833.5511

DEL MAR HIGH SCHOOL CEC
BUS DEPOT CONVERSION

312 DEL MAR AVE., SAN GABRIEL CA 91776
SAN GABRIEL UNIFIED SCHOOL DISTRICT

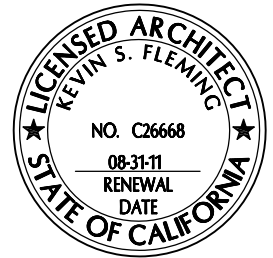
Appl. No:	03-112620	Job No:	12-20318	Date:	03-18-10
Drawn By:	LLAT	Revisions:	A1.0	Sheet:	AD2-A-SK1



BOTTOM OF SOFFIT

SCALE: 3" = 1'-0"

3
X5.2



BOTTOM OF SOFFIT

SCALE 3" = 1'-0"

IBI
GROUP

18401 Von Karman Ave.
suite 110
Irvine, CA 92612

ph: 949.833.5588
fax: 949.833.5511

DEL MAR HIGH SCHOOL CEC BUS DEPOT CONVERSION			
312 DEL MAR AVE., SAN GABRIEL CA 91776 SAN GABRIEL UNIFIED SCHOOL DISTRICT			
Appl. No:	03-112620	Job No:	12-20318
Date:		Date:	03-18-10
Drawn By:	LLAT	Revisions:	3/X5.2
Sheet:		Sheet:	AD2-A-6K2

PROJECT NO. 888.170

MAIN 225A
BUS 225A

PANEL BOARD 1LA

LOCATION ELECTRIC ROOM

DEL MAR HIGH SCHOOL

VOLTS 120/208
PHASE 3PH, 4W
MTG SURFACE

Circuit	-> LOAD (VA)			DESCRIPTION	OUTLET QUAN	BKR	C TYPE	-> LOAD			OUTLET QUAN	DESCRIPTION
	A	B	C					A	B	C		
1	540			CONV. RECEPT.	3	20/1	R	180			20/1	CONV.
3	540			CONV. RECEPT.	3	20/1	R	500			20/1	STC
5	540			RESTROOM RECEPT.	3	20/1	R		500		20/1	EXP1
7	540			RESTROOM RECEPT.	3	20/1	R				20/1	FLEX CLASSROOM RECEPT.
9	540			FLEX CLASSROOM RECEPT.	3	20/1	R	540			20/1	FLEX CLASSROOM RECEPT.
11	540			FLEX CLASSROOM RECEPT.	3	20/1	R		540		20/1	FLEX CLASSROOM RECEPT.
13	540			FLEX CLASSROOM RECEPT.	3	20/1	R				20/1	FLEX CLASSROOM RECEPT.
15	540			FLEX CLASSROOM RECEPT.	3	20/1	R	2304			20/1	FLEX CLASSROOM RECEPT.
17	540			FITNESS RECEPT.	3	20/1	R		275		20/1	FITNESS LIGHTING
19	540			FITNESS RECEPT.	3	20/1	R			322	20/1	FITNESS LIGHTING
21	540			FITNESS RECEPT.	3	20/1	R				20/1	RESTROOM/STORAGE LIGHTING
23	540			FITNESS RECEPT.	3	20/1	R				20/1	RESTROOM/STORAGE LIGHTING
25	1500			MOTORIZED SKYLIGHT	1	20/1	R				20/1	FLEX CLASSROOM LIGHTING
27	540			FLEX CLASSROOM RECEPT.	6	20/1	G		1775		20/1	FLEX CLASSROOM LIGHTING
29	540			FLEX CLASSROOM RECEPT.	3	20/1	G			315	20/1	EXTERIOR LIGHTING
31				SPARE	3	20/1	G				20/1	EXTERIOR LIGHTING
33				SPARE	3	20/1	G				20/1	EXTERIOR LIGHTING
35				SPARE	3	20/1	G				20/1	EXIT SIGNS
37				PROVISION							20/1	EGRESS LIGHTING
39				PROVISION							20/1	SPARE
41				PROVISION							20/1	SPARE
				PROVISION							20/1	PROVISION
				PROVISION							20/1	PROVISION
				PROVISION							20/1	PROVISION

CONNECTED: VA AMPS
 PHASE A = 8579 71
 PHASE B = 5820 49
 PHASE C = 4385 37
 TOTAL = 18784 52

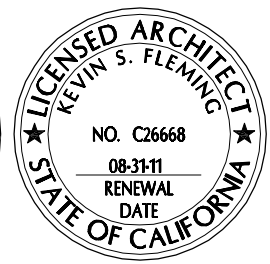
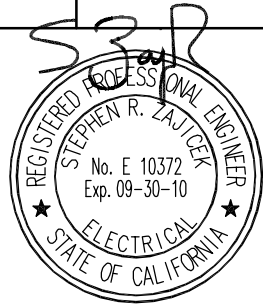
L. C. L. @ 125% = 8705
 RECEPT. (> 10 KVA @ 50%) = 8240
 KITCHEN @ 65% = 0
 OTHER LOAD @ 100% = 3580
 TOTAL VA = 20525
 TOTAL AMPS = 57

LOAD TYPE:
 G - GENERAL (100%) M - MOTOR (100%)
 L - L.C.L. (125%) M1 - MOTOR (125%)
 R - RECEPTACLE (50%) X - X-RAY (100%)
 (10 KVA @ 100%) X1 - X-RAY (50%)
 K - KITCHEN (65%)

R1-INDICATES THE CIRCUIT CONTROLLED BY LIGHTING RELAY PANEL OPERATED BY PHOTOCELL ON/TIME CLOCK OFF PANEL. PROVIDE 3/4" C. -#12, 1#12 GRD. FROM PANEL TO BUILDING LIGHTING CONTROL PANEL.

PANEL SCHEDULE

NONE



IBI GROUP
 18401 Von Karman Ave.
 suite 110
 Irvine, CA 92612
 ph: 949.833.5588
 fax: 949.833.5511

DEL MAR HIGH SCHOOL CEC BUS DEPOT CONVERSION			
312 DEL MAR AVE., SAN GABRIEL CA 91776 SAN GABRIEL UNIFIED SCHOOL DISTRICT			
Appl. No:	112620	Job No:	888.170
Date:	3-17-2010		
Drawn By:	JBM	Revisions:	
Sheet:	AD2-E-SK1		

PROJECT NO. 888.170

MAIN 225A
BUS 225A

PANELBOARD 1LB

LOCATION ELECTRIC ROOM

DEL MAR HIGH SCHOOL

VOLTS 120/208
PHASE 3PH, 4W
MTG SURFACE

Circuit	LOAD (VA)			C TYPE	LOAD (VA)	LOAD (VA)			C TYPE	BKR	OUTLET QUAN	DESCRIPTION
	A	B	C			A	B	C				
1	3546			MI						50/2	1	HP-1
3		3546		MI	794					20/2	1	FC-1
5			3546	MI		794				20/2	1	FC-1
7	3546			MI			794			20/2	1	FC-2
9		3546		MI	794					20/2	1	FC-2
11			3546	MI		794				20/2	1	FC-3
13	3546			MI			794			20/2	1	FC-3
15		3546		MI	794					20/2	1	FC-4
17				MI			794			20/1	1	EF-1
19				SPARE						20/1	1	SPARE
21				SPARE						20/1	1	SPARE
23		930		L						20/2	3	R1- SITE LIGHTING
25	620			L						20/1	2	R2- SITE LIGHTING
27				SPARE						20/1	1	SPARE
29				SPARE						20/1	1	SPARE
31				PROVISION						20/1	2	WIRELESS ACCESS POINTS
33				PROVISION						20/1	1	SPARE
35				PROVISION						20/1	1	SPARE
37				PROVISION						20/1	1	SPARE
39				PROVISION						20/1	1	SPARE
41				PROVISION						20/1	1	SPARE

CONNECTED: VA AMPS
 PHASE A = 14014 117
 PHASE B = 13021 109
 PHASE C = 10405 87
 TOTAL = 37440 104

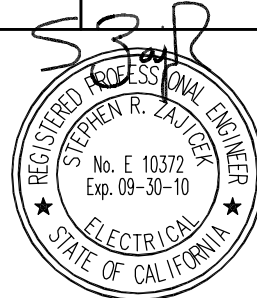
RECEPT. (>) 10 kVA @ 125% = 45342
 KITCHEN @ 65% = 500
 OTHER LOAD @ 100% = 667
 TOTAL VA = 46509
 TOTAL AMPS = 129

LOAD TYPE:
 G - GENERAL (100%) M - MOTOR (100%)
 L - L.C.L. (125%) MI - MOTOR (125%)
 R - RECEPTACLE (50%) X - X-RAY (100%)
 (10 kVA @ 100%) XI - X-RAY (50%)
 K - KITCHEN (65%)

R1- INDICATES THE CIRCUIT CONTROLLED BY LIGHTING RELAY PANEL OPERATED BY PHOTOCELL ON/TIME CLOCK OFF PANEL. PROVIDE 3/4" C. -2#12, 1#12 GRD. FROM PANEL TO BUILDING LIGHTING CONTROL PANEL.
 R2- INDICATES THE CIRCUIT CONTROLLED BY LIGHTING RELAY PANEL OPERATED BY TIME CLOCK ON/TIME CLOCK OFF PANEL. PROVIDE 3/4" C. -2#12, 1#12 GRD. FROM PANEL TO BUILDING LIGHTING CONTROL PANEL.

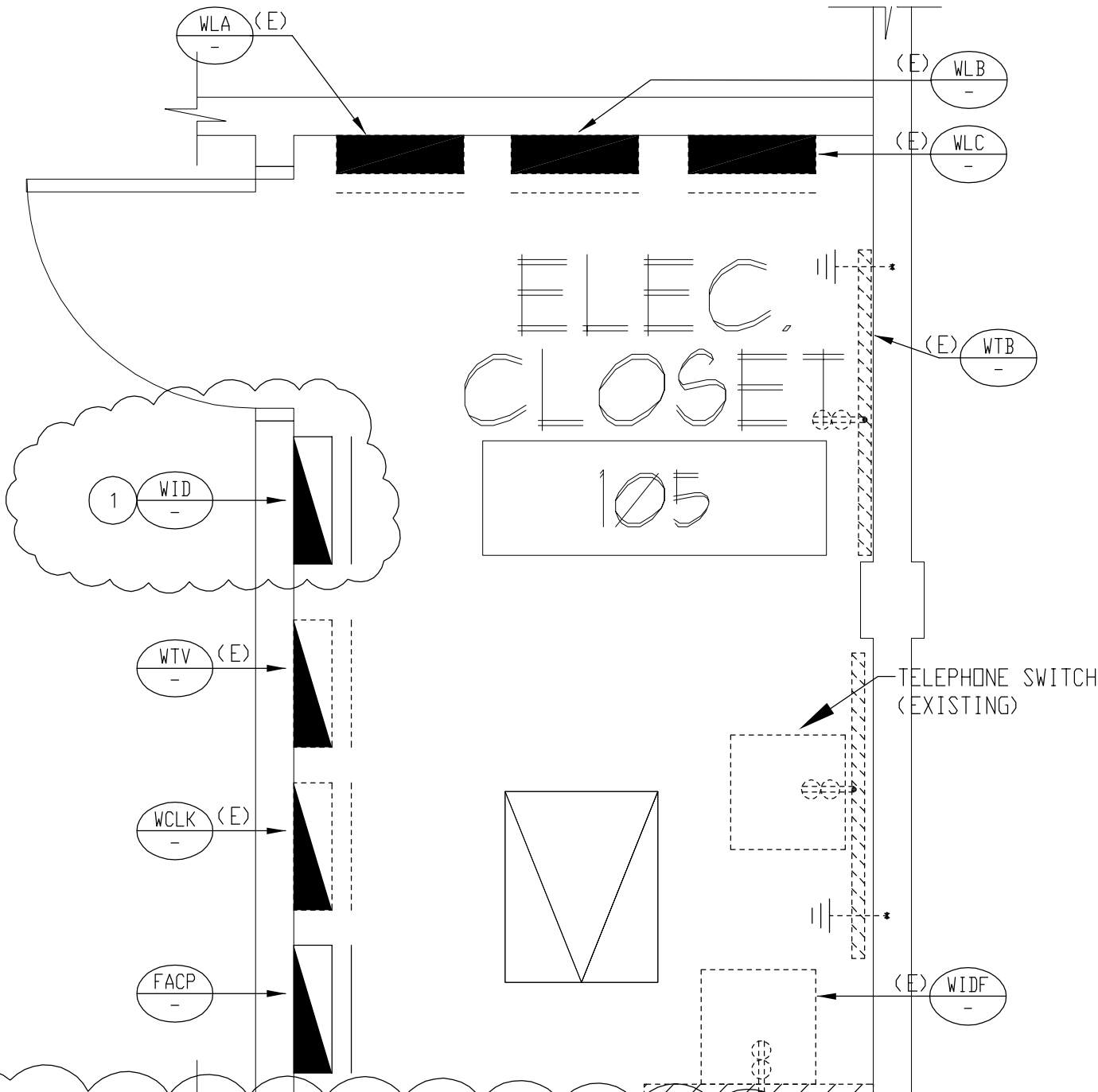
PANEL SCHEDULE

NONE

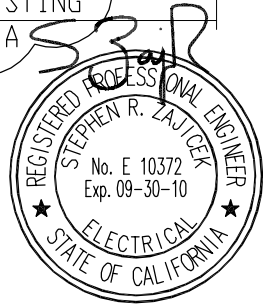


IBI GROUP
 18401 Von Karman Ave.
 suite 110
 Irvine, CA 92612
 ph: 949.833.5588
 fax: 949.833.5511

DEL MAR HIGH SCHOOL CEC BUS DEPOT CONVERSION			
312 DEL MAR AVE., SAN GABRIEL CA 91776 SAN GABRIEL UNIFIED SCHOOL DISTRICT			
Appl. No:	112620	Job No:	888.170
Date:	3-17-2010		
Drawn By:	JBM	Revisions:	
Sheet:	AD2-E-SK2		



1 PROVIDE NEW INTRUSION DETECTION PANEL TO REPLACE THE EXISTING PANEL. RECONNECT EXSITING DEVICES TO THE NEW PANEL FOR A COMPLETE AND OPERABLE SYSTEM.



EXISTING ELECTRICAL ROOM DETAIL

1/4" = 1'-0"

IBI GROUP
 18401 Von Karman Ave.
 suite 110
 Irvine, CA 92612
 ph: 949.833.5588
 fax: 949.833.5511

DEL MAR HIGH SCHOOL CEC BUS DEPOT CONVERSION			
312 DEL MAR AVE., SAN GABRIEL CA 91776 SAN GABRIEL UNIFIED SCHOOL DISTRICT			
Appl. No:	112620	Job No:	888.170
Date:	3-17-2010		
Drawn By:	JBM	Revisions:	
Sheet:	AD2-E-6K3		